

# Catalog

Product @ Service

Chemicals >>

WTP/WWTP >>

Cleaning >>

Maintenance >>



PT. BRAHMASTA CIPTA SEMPURNA

WATER TREATMENT & CHEMICALS



Office : Ruko mutiara Taman Palem,  
Blok A5 No. 57 Cengkareng

Brach Office : Bukit Cendana J-00/03. Citra Indah City  
Jonggol, Bogor Timur 16830

Tlp : (021) 2294 9126

Email : brahmastaciptasempurna@gmail.com

Website : www.brahmasta.co.id



Chemical Product

## BOILER ~ CHEMICALS



Boiler water treatment is used to control alkalinity, prevent scaling, correct pH, and to control conductivity. The boiler water needs to be alkaline and not acidic, so that it does not ruin the tubes. There can be too much conductivity in the feed water when there are too many dissolved solids. These correct treatments can be controlled by efficient operator and use of treatment chemicals. The main objectives to treat and condition boiler water is to exchange heat without scaling, protect against scaling, and produce high quality steam

### Types of Boiler ~ CHEMICALS :

- |  |              |
|--|--------------|
| <input type="checkbox"/> Antiscalant               | : R3© CB 102 |
| <input type="checkbox"/> Corrosion Inhibitor       | : R3© CB 104 |
| <input type="checkbox"/> Oxygen Scavenger          | : R3© CB 105 |
| <input type="checkbox"/> Corrosion condensate pipe | : R3© CB 106 |
| <input type="checkbox"/> Alkalinity Builder        | : R3© CB 107 |
| <input type="checkbox"/> Defoarmers                | : R3© CB 108 |

## COOLING TOWER ~ CHEMICALS



Fouling, biological growth and corrosion can disrupt cooling tower operations. However, PT. Brahmasta Cipta Sampurna's water treatment chemicals, technologies, engineering expertise and years of industry experience can help overcome and prevent these potential challenges. Treating water for cooling towers is an integral part of the process operations in many industries and is used to minimise water depletion and remove zinc, chromates and carbonate from the water used in cooling towers.

Cooling tower chemical dosing prevents growths that may interfere with continuous water flow. The circulating cooling water is treated to minimise scaling and fouling and to remove particulates. Examples of the most common applications for cooling tower water treatment include cooling the water used in petrochemical plants, oil refineries, HVAC systems for cooling buildings and thermal power stations.

### Types of Water Cooling ~ CHEMICALS :

- Antiscalant : **R3© CC-201**
- Biocides - Anti Algae : **R3© CC-202**
- Biofouling : **R3© CC-203**
- Alkalinity Builder : **R3© CC-206**
- Defoarmers : **R3© CC-208**
- Close circuit system-Corrosion : **R3© CC-209**

## REVERSE OSMOSIS (RO) ~ CHEMICALS



to improve the performance of your reverse osmosis system's membranes. Reverse osmosis (RO) membrane performance can be negatively impacted by impurities that build up on the membrane surface during operations. Suspended solids, microorganisms and mineral scale can foul membrane elements. These deposits can cause loss in output and/or rejection levels and reduce total system performance.

Without the usage of RO chemicals, huge deposits of suspended solids within the feed water will stick on the surface of the membrane and be unable to be filtered from passing through the reverse osmosis membranes. Reverse osmosis systems work by forcing water through membranes and filtering out the suspended solids within the source water. In order for these RO systems to maintain their effectiveness, reverse osmosis chemicals must be used to make the surface smoother and not allow the

### Types of Reverse Osmosis ~ CHEMICALS :

- Antiscalant : **R3© CRO-301**
- Chlorin remover : **R3© CRO-302**
- Inorganic Fouling : **R3© CRO-303**

## CLEANER ~ CHEMICALS



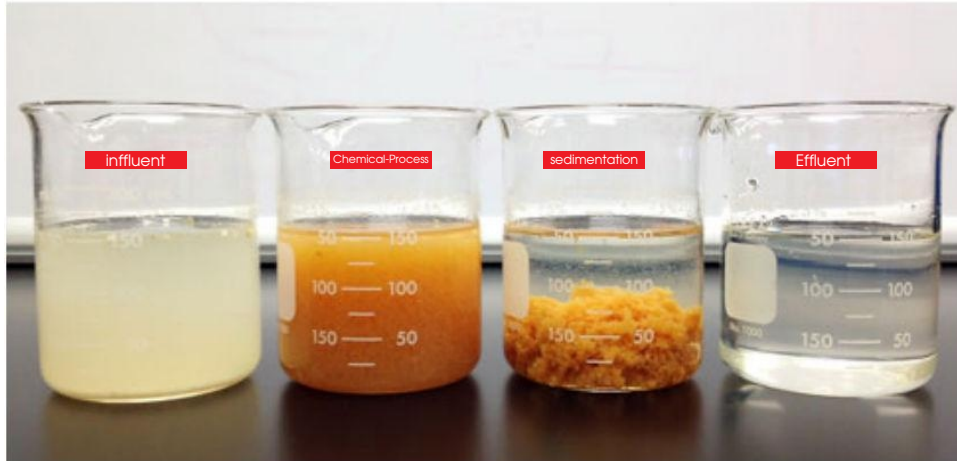
Specialist chemical cleaning products for use in production, and maintenance operations

We at Brahmasta Cipta developed number of Industrial Cleaners which offer fast results at very economical cost & most importantly which are environment friendly, user friendly. Or Industrial cleaning start from simple cleaning to critical cleaning of parts, equipments, accessories etc.

### Types of Cleaner ~ CHEMICALS :

- |                          |                       |                |
|--------------------------|-----------------------|----------------|
| <input type="checkbox"/> | Scale Remover         | : R3© CL - 501 |
| <input type="checkbox"/> | Silica Remover        | : R3© CL - 502 |
| <input type="checkbox"/> | Neutralizer Liquid    | : R3© CL - 503 |
| <input type="checkbox"/> | Flushing Boil-out     | : R3© CL - 505 |
| <input type="checkbox"/> | Inorganic Remover     | : R3© CL - 507 |
| <input type="checkbox"/> | RO - membrane Cleaner | : R3© CL - 509 |

## WASTE WATER TREATMENT ~ CHEMICALS



Our Chemical can meet all of your wastewater treatment chemical needs for industrial and municipal applications. We offer everything from defoamers and flocculants to inorganic and organic coagulants. Our technical specialists can help you improve your treatment process, reduce costs or solve compliance problems. Our experienced staff can help you navigate the ever more demanding regulatory environment most firms operate in. Through our knowledge of chemicals and equipment we can help you develop innovative solutions to meet your demanding needs

### Types of Waste Water Treatment ~ CHEMICALS :

- Defoamers
- Flocculant Agent
- Coagulant Agent
- Oxydating Agent
- Sludge Conditioner



Water Treatment Plant



## SAND FILTER

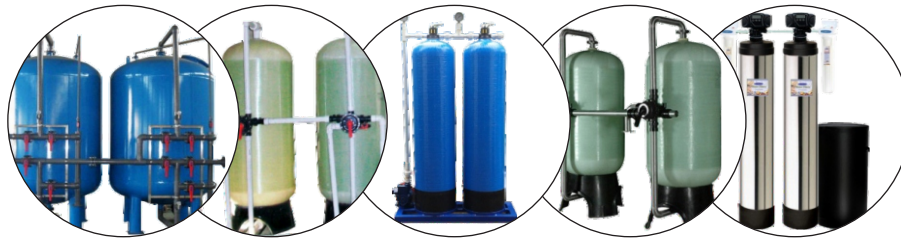
A sand filter makes use of sand to filter water. The water to be purified slowly sinks through the sand of the sand filter, leaving the dirt particles from the water behind in the fine pores of the sand. This filter technology is especially suitable for pre-filtration of disinfection equipment, preparation for micro- and ultra-filtration, recirculation systems, rinse water processes, irrigation systems, basin water filtration and ground water cleaning.

## ACTIVATED CARBON FILTER

Carbon filtering is a method of filtering that uses a bed of activated carbon to remove contaminants and impurities, using chemical adsorption. Each particle/granule of carbon provides a large surface area/pore structure, allowing contaminants the maximum possible exposure to the active sites within the filter media.

## IRON & MANGANESE FILTER

Iron and manganese water filters help to reduce levels of iron and manganese in your water. Water containing high levels of iron and manganese can be unpleasant, both in taste and appearance, and often result in the staining of bathtubs, sinks and clothes.



### Technical Specification

| MODEL   | DIMENSI mm    | KAPASITAS M <sup>3</sup> /JAM | MOC      | UKURAN PIPA INCH |
|---------|---------------|-------------------------------|----------|------------------|
| 10 SF   | Ø 250 X 1200  | 1.0 - 1.25                    | FRP      | ¾                |
| 12 SF   | Ø 300 X 1200  | 1.4 - 1.8                     | FRP      | 1                |
| 14 SF   | Ø 350 X 1200  | 1.9 - 2.4                     | FRP      | 1                |
| 16 SF   | Ø 400 X 1200  | 2.5 - 3.1                     | FRP      | 1                |
| 18 SF   | Ø 450 X 1200  | 3.2 - 4.0                     | FRP      | 1¼               |
| 20 SF/F | Ø 500 X 1200  | 4.0 - 5.0                     | FRP      | 1¼               |
| 20 SF   | Ø 500 X 1200  | 4.0 - 5.0                     | MS - FRP | 1¼               |
| 24 SF   | Ø 610 X 1200  | 5.8 - 7.6                     | MS - FRP | 1½               |
| 28 SF   | Ø 710 X 1200  | 8.0 - 10                      | MS - FRP | 1½               |
| 30 SF   | Ø 760 X 1200  | 10 - 12                       | MS - FRP | 1½               |
| 36 SF   | Ø 910 X 1200  | 13 - 17                       | MS - FRP | 2                |
| 42 SF   | Ø 1060 X 1200 | 18 - 22                       | MS - FRP | 2                |
| 48 SF   | Ø 1200 X 1200 | 22 - 30                       | MS - FRP | 2½               |
| 54 SF   | Ø 1370 X 1500 | 30 - 36                       | MS - FRP | 2½               |
| 60 SF   | Ø 1500 X 1500 | 36 - 44                       | MS - FRP | 3                |
| 66 SF   | Ø 1680 X 1500 | 45 - 55                       | MS - FRP | 3                |
| 72 SF   | Ø 1830 X 1500 | 56 - 65                       | MS - FRP | 4                |
| 78 SF   | Ø 1960 X 1500 | 66 - 75                       | MS - FRP | 4                |
| 84 SF   | Ø 2130 X 1500 | 76 - 90                       | MS - FRP | 4                |
| 90 SF   | Ø 2290 X 1500 | 90 - 105                      | MS - FRP | 5                |
| 96 SF   | Ø 2440 X 1800 | 105 - 120                     | MS - FRP | 5                |
| 102 SF  | Ø 2600 X 1800 | 120 - 135                     | MS - FRP | 6                |
| 108 SF  | Ø 2740 X 1800 | 135 - 150                     | MS - FRP | 6                |
| 120 SF  | Ø 3050 X 1800 | 150 - 185                     | MS - FRP | 8                |

## WATER SOFTENER

A water softener is important because it helps to soften hard water. In effect, this fortifies the durability of appliances and generally counters the negative effects of hard water. It uses numerous small resin beads inside the tank to filter out minerals such as calcium and magnesium ions. Salt is also used in the process in order to clean the resin beads,



### Technical Specification

| MODEL  | Kapasitas (m <sup>3</sup> /jam) | Kebutuhan garam (kg/regenerasi) | Material | UKURAN PIPA |
|--------|---------------------------------|---------------------------------|----------|-------------|
| 16 S   | 1.0                             | 3.5                             | FRP      | ¾           |
| 32 S   | 2.0                             | 7                               | FRP      | 1           |
| 40 S   | 2.5                             | 9                               | FRP      | 1           |
| 48 S   | 2.8                             | 10.5                            | FRP      | 1           |
| 64 S   | 3.0                             | 14                              | FRP      | 1           |
| 80 S   | 3.3                             | 17.5                            | FRP      | 1           |
| 90 S   | 3.5                             | 21                              | FRP      | 1           |
| 160 S  | 6.0                             | 35                              | FRP      | 1½          |
| 190 S  | 8.0                             | 42                              | MS - FRP | 1½          |
| 225 S  | 9.5                             | 50                              | MS - FRP | 1½          |
| 250 S  | 11.5                            | 55                              | MS - FRP | 1½          |
| 320 S  | 13.5                            | 70                              | MS - FRP | 1½          |
| 480 S  | 15.0                            | 105                             | MS - FRP | 1½          |
| 640 S  | 17.0                            | 140                             | MS - FRP | 2           |
| 800 S  | 19.0                            | 175                             | MS - FRP | 2           |
| 960 S  | 20.0                            | 210                             | MS - FRP | 2½          |
| 1120 S | 22.0                            | 245                             | MS - FRP | 2½          |
| 1300 S | 24.0                            | 280                             | MS - FRP | 2½          |
| 1500 S | 28.0                            | 330                             | MS - FRP | 3           |

## WATER MIXED BED

The goal of deionization is to remove ionic dissolved salts and minerals from the water. By passing water through ion exchange resin, these sediments are removed from the water, effectively rendering it highly purified

### Tecnical Spesification

| <i>Model</i> | <i>Kapasitas (m<sup>3</sup>/Jam)</i> | <i>Kapasitas penukaran Ion (grain)</i> | <i>Ukuran Pipa</i> |
|--------------|--------------------------------------|--|--------------------|
| 14 MB        | 2.0                                  | 34.000                                 | 1                  |
| 20 MB        | 3.5                                  | 70.000                                 | 1                  |
| 24 MB        | 5.5                                  | 105.000                                | 1½                 |
| 30 MB        | 10.0                                 | 165.000                                | 1½                 |
| 36 MB        | 20.0                                 | 230.000                                | 2                  |
| 48 MB        | 30.0                                 | 400.000                                | 2½                 |
| 60 MB        | 40.0                                 | 650.000                                | 3                  |

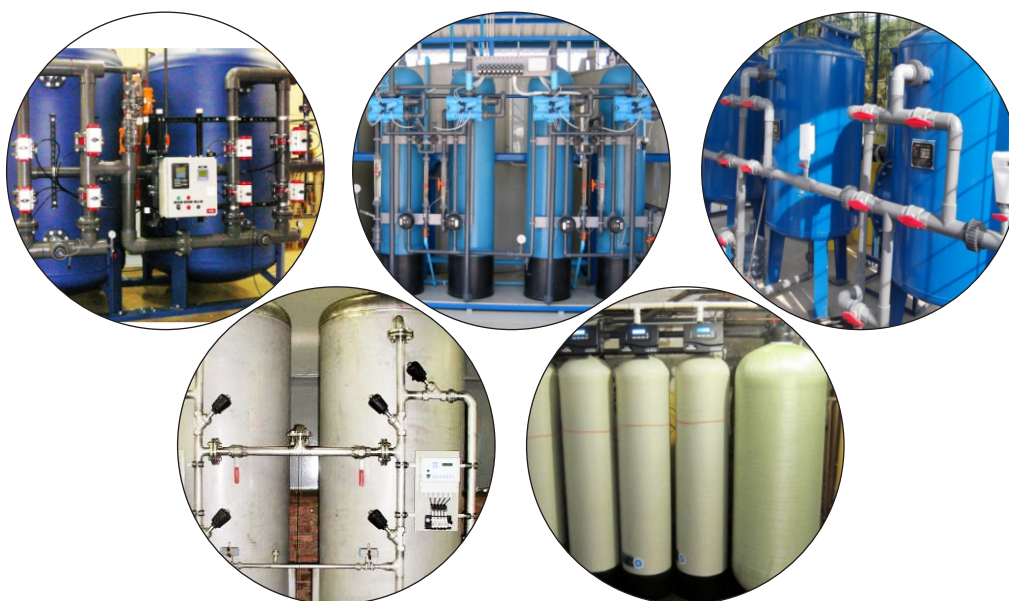
### Tecnical Spesification

| <i>Model</i> | <i>Kapasitas (m<sup>3</sup>/Jam)</i> | <i>Dimensi mm</i> | <i>Ukuran Pipa</i> |
|--------------|--------------------------------------|-------------------|--------------------|
| 6 PM         | 0.2                                  | 150 x 830         | ¾                  |
| 10 PM        | 0.5                                  | 250 x 1370        | ¾                  |
| 12 PM        | 0.7                                  | 300 x 1370        | 1                  |
| 14 PM        | 1.0                                  | 350 x 1350        | 1                  |



## WATER DEMINERALIZER

Problems associated with hard water can be minimized by using a demineralizer. Untreated hard water can cause increased utility bills, higher operating costs, decreased equipment efficiency and life, increased use of detergents and chemicals and increased boiler blow-downs and downtime



| MODEL  | Kapasitas (m <sup>3</sup> /jam) | Kebutuhan garam (kg/regenerasi) | Material | UKURAN PIPA |
|--------|---------------------------------|---------------------------------|----------|-------------|
| 10 D   | 0.5 - 1.0                       | 3.5                             | FRP      | ¾           |
| 20 D   | 1.1 - 1.3                       | 7                               | FRP      | 1           |
| 40 D   | 1.4 - 1.6                       | 9                               | FRP      | 1           |
| 70 D   | 1.7 - 2.0                       | 10.5                            | FRP      | 1           |
| 100 D  | 2.5 - 3.3                       | 14                              | FRP      | 1           |
| 120 D  | 3.4 - 3.8                       | 17.5                            | FRP      | 1           |
| 140 D  | 3.9 - 4.2                       | 21                              | FRP      | 1           |
| 160 D  | 4.3 - 5.0                       | 35                              | FRP      | 1½          |
| 200 D  | 6.0 - 7.0                       | 42                              | MS - FRP | 1½          |
| 300 D  | 7.5 - 10                        | 50                              | MS - FRP | 1½          |
| 400 D  | 11 - 14                         | 55                              | MS - FRP | 1½          |
| 500 D  | 15 - 17                         | 70                              | MS - FRP | 1½          |
| 600 D  | 18 - 20                         | 105                             | MS - FRP | 1½          |
| 800 D  | 22 - 28                         | 140                             | MS - FRP | 2           |
| 1000 D | 30 - 34                         | 175                             | MS - FRP | 2           |
| 1200 D | 35 - 40                         | 210                             | MS - FRP | 2½          |

## FILTER MEDIA



We ready to help you in calculate and supply various high quality of filter media, such as :

- Ferolite
- Manganesse Zeolite
- Antrachite
- Sand Silica Gravel
- Carbon Active (Powder & Granule)
- Pyrolox
- And others media filter





Service – Provide

## ENGINEERING & DESIGN

With **years of experienced team**, in various engineering field. We have the best team that ready to support you in fabrication & installation services. Our Specialties are :

### **Water Treatment :**

Reverse Osmosis, Demineralizers, Water Desalination, Water Disinfection, Hardness Removal, Boiler Make Up Water, Colling Tower System, Clean Water Treatment.

### **Waste Water Treatment System :**

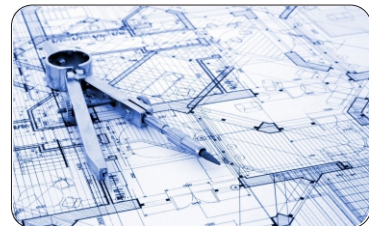
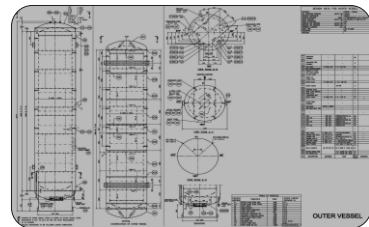
Plating Industry, Manufacturing Industry, Textile Industry, Pharmacy Industry, Foods & Beverage Industry, Dairy Industry, Cometic Industry, Hospital And Office Other

### **Pressure Vessel Design :**

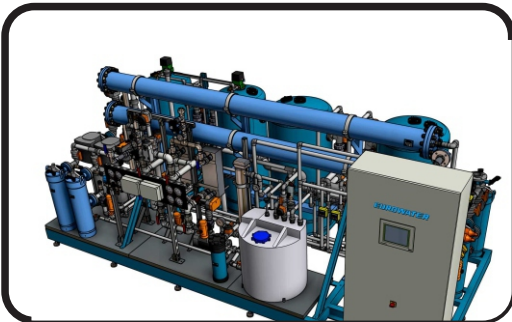
Boiler, Gas Vessel, Petroleum Vessel, Crude Oil Vessel & Other Pressurized Vessel

### **Pipe Design :**

Chose Pipe Material, Defining Pipe Schedule, Defining Support, Pipe Stress Analysis, And Others Design Works Related To Pipe Engineering.



## FABRICATION & INSTALLATION



With **years of experienced team**, in various engineering field. We have the best team that ready to support you in fabrication & installation services. Our Specialties are :

### **Tank Fabrication :**

Demin System Vessel, Pressurized Vessel, Sedimentation Tank, Clarifier Tank, & Others.  
With Using Mild steel or Stainless Steel.

### **Water Treatment Installation**

:

We have the best team to install and design RO-system, Demin and Others with 100% Work Guarantee and Will have a long life system.

### **Waste Water Treatment Installation :**

We can make & install various system for various industry. Aeration System, Chemical Reactor System, DAF system, Equalization System, COD removal System and more.

### **Automation Control Installation :**

We can provide you the latest technology of automation control such as : SCADA system, HMI (Human Machine Interface), Automatic Flush Scrubber, and Others.



## TRAINING, COONSULTATION AND SUPERVISORY

With deep field experience, we ensure you to get the correct input base on real experience.

**We provide you the consultation for :**

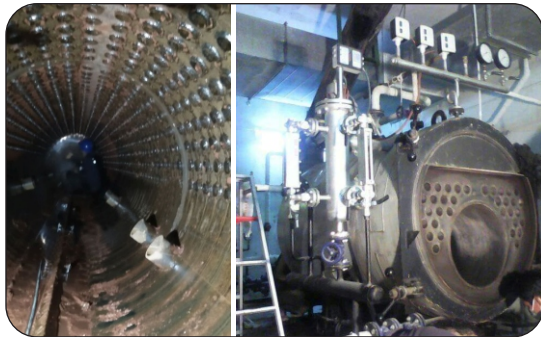
- AMDAL**
- IPLC**
- Disturbance Permit**
- System Design**

**We also provide training service for :**

- Water & Waste Water Treatment system Running**
- Piping Design Engineering**
- Water Treatment Engineering**
- Waste Water Treatment Engineering**
- Pressure Vessel Design**
- Work Permit and JSA**
- CSMS**



## CLEANING & MAINTENANCE



### BOILER MAINTENANCE & CLEANING

It is important to have your boilers cleaned. After cleaning, the total efficiency of the boiler will increase. This means your boiler will not have to work as hard to produce the same amount of heat as before. We also clean the system without causing any damage to the refractory or insulation within the system.



### WWTP MAINTENANCE & SERVICE

Full system cleaning & Maintenance, from floor, to roof. Re-callibration, machine alignment, base setting & others activities to ensure your treatment system



### WTP, RO MAINTENANCE & SERVICE

Ensure Stabilize running with cleaning activity, and train the operator to do historical analysis to make preventive maintenance system in order to get the best result.



# CONTACT US

## BRAHMASTA CIPTA SEMPURNA. PT



**Head Office** : Ruko Mutiara Taman Palem Blok A5, No. 57, Cengkareng, Jakarta Barat

**Brach Office** : Bukit Cendana J-00/03. Citra Indah City - Jonggol, Bogor Timur 16830



021-2294-9126



**Email** : [info@brahmasta.co.id](mailto:info@brahmasta.co.id)  
[brahmastaciptasempurna@gmail.com](mailto:brahmastaciptasempurna@gmail.com)



**Website** : <https://www.brahmasta.co.id>